



NASEBY C of E NEWSLETTER



Let all that you do
be done in Love
1 Corinthians 16:14

7th January 2022



TOP NEWS

Delayed start to term due to power cut.

We warmly welcome two new members of staff, to our team.

Head's Update

Happy New Year everyone! I hope you and your family have had a wonderful Christmas holiday. Unfortunately, we didn't quite get the return to school we were hoping for on Tuesday! All was well when I checked the school the previous week, so I was surprised to arrive on Tuesday morning to no electricity, no heating and the freezer in the kitchen completely defrosted! It became clear that sadly we were left with no option but to close the school on that first day. Both staff and myself were greatly disappointed. I was truly grateful for the Naseby Village What's App group and Class Dojo that enabled us to get the message out as soon as possible, despite not having any internet or email. Several engineers later and we were delighted to be able to finally welcome children back on Wednesday! We apologise for any disruption and inconvenience caused to parents on Tuesday and thank you for being so accommodating and supportive.

We began our first day with a Collective Worship thinking about what may change as the New Year begins? We thought about the rings inside a tree and talked about how they grow wide in a good year when there has been plenty of rain and sunshine and how they only grow a little due to bad weather conditions. But, despite conditions good or bad, a tree still grows a new ring – just as we grow from all our experiences which provide times when we can learn, have fun and do good things. I hope that 2022 brings lots of happy and exciting experiences for everyone to enjoy and learn from and that we develop the resilience we need to overcome any challenges and difficulties along the way.

It was fantastic to be able to welcome not one but two new Teaching Assistants to our staff team; Mrs. Markham who will be supporting Wise Wolves Class and Mrs. Linyard who will be supporting Fantastic Fox Cubs and Busy Badgers Classes. Their arrival has already made a huge difference supporting children in the classroom and in the hall & playground at lunchtimes.

It was lovely to see so many smiling faces come running through the gate this week and an absolute delight to hear the children singing so beautifully at assembly. I am looking forward to visiting classrooms next week to see the wonderful activities the children are engaged in, starting their new topics.

Mrs Cook



This week we have celebrated and sang

★HAPPY BIRTHDAY!★



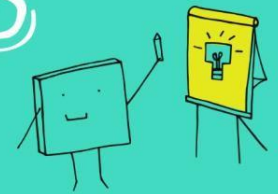
To, Ollie and Emilie

from everyone at
Naseby C of E
Primary Academy



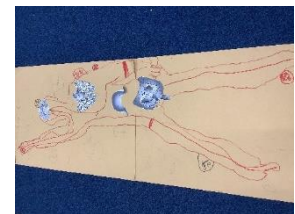
CLASS NEWS

Weekly Update



Fantastic Fox Cubs

Reception have enjoyed beginning their new topic 'Rocket to the moon!' and have begun to read 'Whatever Next!' They have really enjoyed retelling the story and are beginning to plan their own version of the story. Year 1 and 2 have begun to look at diary entries and have retold an entry about a trip to the zoo using actions. We have started our new topic 'Iceberg Ahead!' and are looking forward to learning more about the historic event. They have also been looking at the human body in PSHE.



Busy Badgers

After a slightly delayed start to the term, it has been wonderful to have the busy badgers back in school. They wasted no time in getting stuck into our new topic for this term, 'Russia'. So far, we have looked in detail at maps of the country to discover its geographical features and locate cities. The class has come up with a long list of questions and information about Russia which they would like to explore further in the coming weeks. In our Maths lessons, we have been using our knowledge of times table to solve related facts and to create factor flowers. During Science, we found a variety of different ways to group living things.



Wise Wolves

This week the Wise Wolves have been learning about the embalming process during ancient Egyptian times. We have created a list of fool-proof instructions to give to an apprentice embalmer. In maths, we have been learning how to add fractions with different denominators and use bar models to help us to add three or more fractions. In English, we have started our writing unit by explaining how to look after a pet. This included how to feed, train and care for the various animals. Next week, we will be looking at the structure and style of explanation texts in more detail. In science, we completed a double-page spread to finish our unit about the human body.



NSA Update



**Monday 17th January - Bags2School,
9am at the main gate.**



**Wednesday 19th January 7:30pm –
NSA Planning meeting on Zoom**

<https://deloitte.zoom.us/j/95857517525?pwd=Ymp0RmQ0Q3RKcVRWS041WmtZaW92QT09>

Meeting ID 958 5751 7525
Password 420381

What Parents & Carers Need to Know about SETTING UP NEW DEVICES FOR CHILDREN

At Christmas, millions of lucky children will be excitedly ripping the wrapping off new phones, tablets, computers or consoles. However, in the rush to let young ones enjoy their shiny gadgets, many parents neglect to set these devices up safely – increasing the chances of children going online and stumbling across adult content, making expensive downloads or installing unsuitable apps. A little time configuring the device properly can save a lot of anguish later. Here are our top tips to ensure that a dream gift on Christmas morning doesn't turn into a nightmare by New Year.

PASSCODES FOR IPHONE/IPAD

If your child's getting their own iPhone or iPad, you can set parental controls that make it difficult for them to access inappropriate content or download expensive apps. Once the device is set up, go to the Settings app and tap Screen Time, then select Use Screen Time Passcode and enter a passcode. Keep it to yourself so your child can't switch the protection off.

SCREEN TIME SETTINGS ON IPHONE/IPAD

Once you've set a Screen Time Passcode, you can adjust various safety settings. You could, for example, only allow communication with people from the Contacts app, place restrictions on App Store purchases and apply age limits to movies, music and web content. There are many more protective options available within the Screen Time settings section.

FAMILY LINK FOR ANDROID

Parents can manage Android phones and tablets, as well as Google Chromebooks, through Google's Family Link app. This gives your child some independence (and their own Google account) but lets parents monitor which apps are being used, set limits on content and ensure that parental permission is required to install apps. Look for Family Link in the Google Play Store.

ADD A CHILD TO FAMILY LINK

The easiest way to add a child's device to Family Link is to set it up with its own Google account. It's a good idea to create this before they use their new phone, tablet or Chromebook. Once they're logged in, open the Family Link app on your phone, press '+' in the top right and add a new family member using their Google account details. Then follow the on-screen instructions.

FAMILY SHARING ON A MAC

Families using a Mac get similar screen time options to iPhone and iPad users. Again, if you're setting up a Mac for a child, make yourself the main admin and add them as a user. This is handled through Apple's Family Sharing service, which not only allows you to put controls on child accounts but share apps and other purchases with them too. Search 'family sharing' at <https://support.apple.com>.

Meet Our Expert

Barry Collins has been a technology journalist and editor for more than 20 years, working for titles such as the *Sunday Times*, *Which?*, *PC Pro* and *Computeractive*. He's appeared regularly as a technology pundit on television and radio, including on *Newsnight*, *Radio 5 Live* and *ITV News at Ten*. He has two children and writes regularly about internet safety issues.

PLAYSTATION PARENTAL CONTROLS

With parental controls for the PS5, you'll need a PlayStation Network account (as the 'family manager') and the child will need their own account, which they should sign in with on the console. This all needs to be set up in advance, so you might want to do it before the big day. Go to PlayStation.com and search 'family account' for instructions.

DISCUSS IT WITH YOUR CHILD

If you're planning to implement any kind of restriction or protection settings on your child's new device, we'd recommend having a discussion with your young one first about what these controls do, and what they are for. If you try to impose parental controls surreptitiously or with no advance warning, don't be surprised if your child tries to find a way around them.

SET AN ADMIN ON PCS

On Windows PCs and laptops, it's important not to let your child share a general user account or be the main admin on the device. If you're booting up a new family PC or a child's own device, set it up using your own account details and you'll become the admin by default. Then set up children with their own separate account: Settings > Accounts > Family & Other Users > Add Other User.

SET WINDOWS LIMITS

Once your child's account has been created, a parent admin can go back into the Family & Other Users menu and apply limits to it. These include restricting screen time, the type of games and apps that can be installed, web filters and more. Microsoft also includes reporting tools which, for example, can email you with a weekly summary of your child's activity on the device.

TREAT AN XBOX LIKE A PC

The same control settings you use for a PC can be used to apply parental controls on an Xbox. Again, once your child is signed into the Xbox with their own account, you can then monitor and regulate their activity from a PC or web browser. Microsoft's dashboard allows you to manage voice communication through the console: so you can limit who can contact your child, for example.

INSTALL XBOX FAMILY SETTINGS

If you don't have a PC, but your child does have an Xbox, it might be easier to use the Xbox Family Settings app for iPhone or Android. Here, you can restrict console screen time (particularly handy if the console is in a bedroom), restrict communication and monitor the types of game being played. There's also a feature where you can allocate spending money for games or in-game purchases.

STAY VIGILANT

It's important to remember that none of these methods is 100% foolproof. Nobody will ever invent flawless filters or parental controls – not least because what's unacceptable to some parents is perfectly acceptable to others. So although devices' parental controls will help to keep your child safe online, they work best side by side with good old-fashioned parental vigilance.