



# Natural Disasters

By Scott

# Galtür Avalanche





Hello I'm Travis the snake and I'm going to tell you all in my presentation about the Galtür avalanche.

# What happened?

- The Galtür avalanche was a powder avalanche that destroyed part of the ski resort of Galtür.

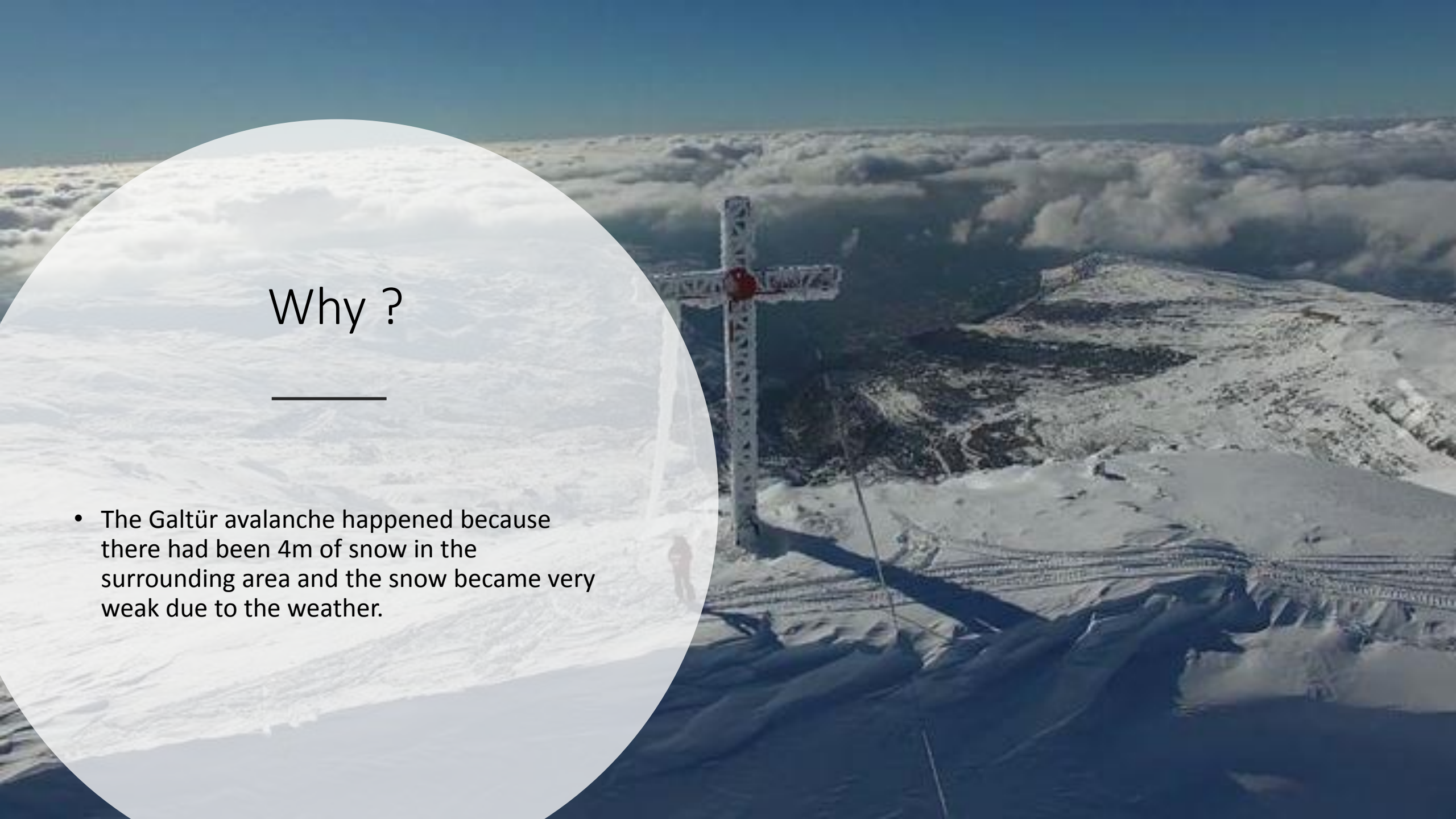
What is an avalanche?

- An avalanche is a event which occurs when a slab of snow on top of weaker snow falls down a steep slope.

# Why ?

---

- The Galtür avalanche happened because there had been 4m of snow in the surrounding area and the snow became very weak due to the weather.





Where?

Galtür is a small  
ski resort in  
southern Austria

# Who?

---

- In the avalanche 6 locals died
- As well as locals , 21 tourists died in the disaster.
- Luckily , 26 people escaped from being trapped in the snow .





# Effects

- Collapsed buildings
- Deaths
- Peoples homes destroyed

Total devastation !





Once Galtür was a  
lonely alpine village ...

- The next day ...

A scene of  
destruction



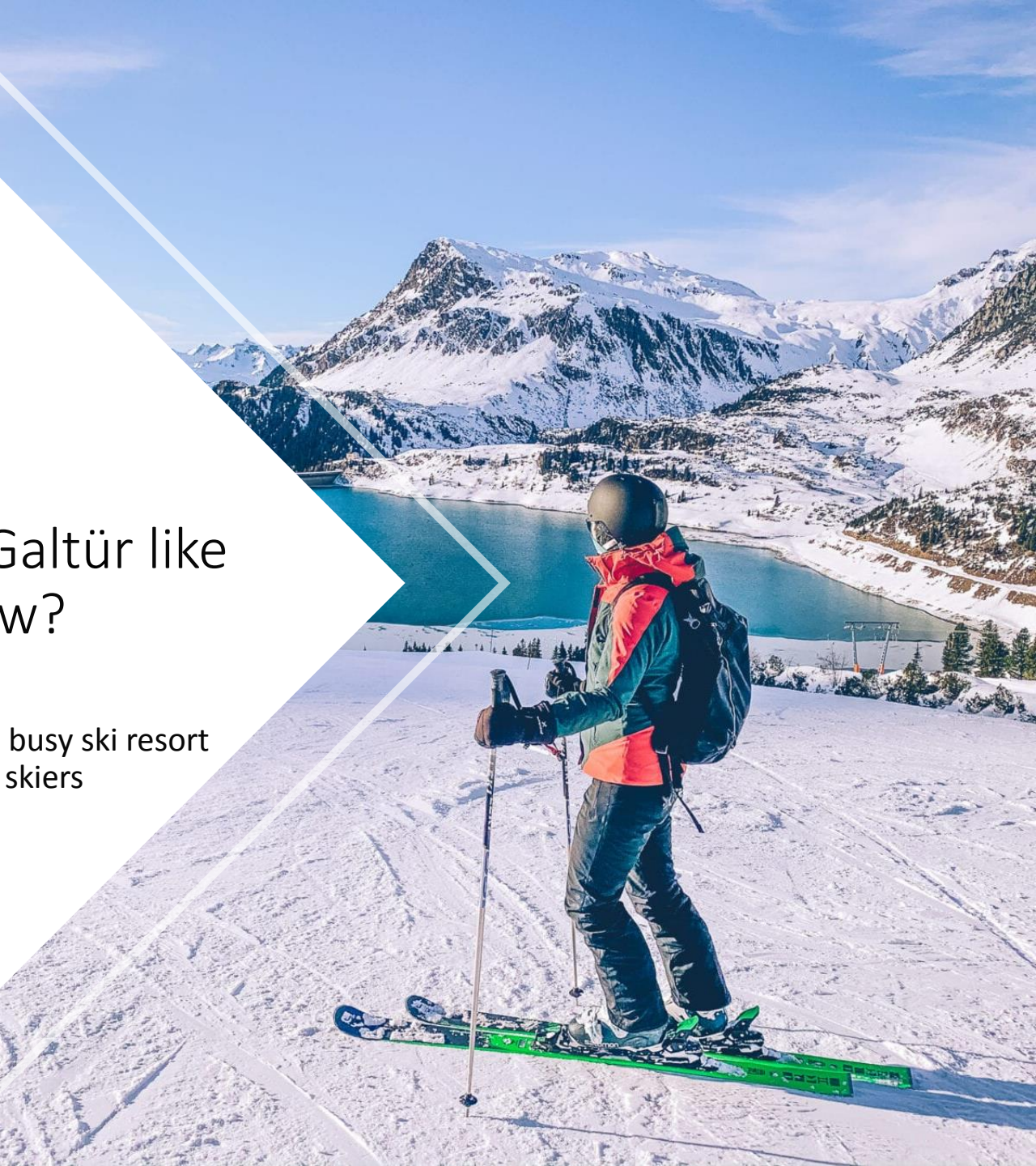


Picture time









What is Galtür like  
now?

Galtür now is a busy ski resort  
full of skiers

An aerial photograph of a Swiss village, likely Galtür, showing a mix of traditional wooden houses and modern buildings. A prominent church with a tall, red-roofed spire is visible in the center-right. In the foreground, there is a green lawn and a tennis court. The background features rolling green hills and dense forests. The image is overlaid with a large white diamond shape containing the text "Galtür before ...".

Galtür before ...

When it happened ...



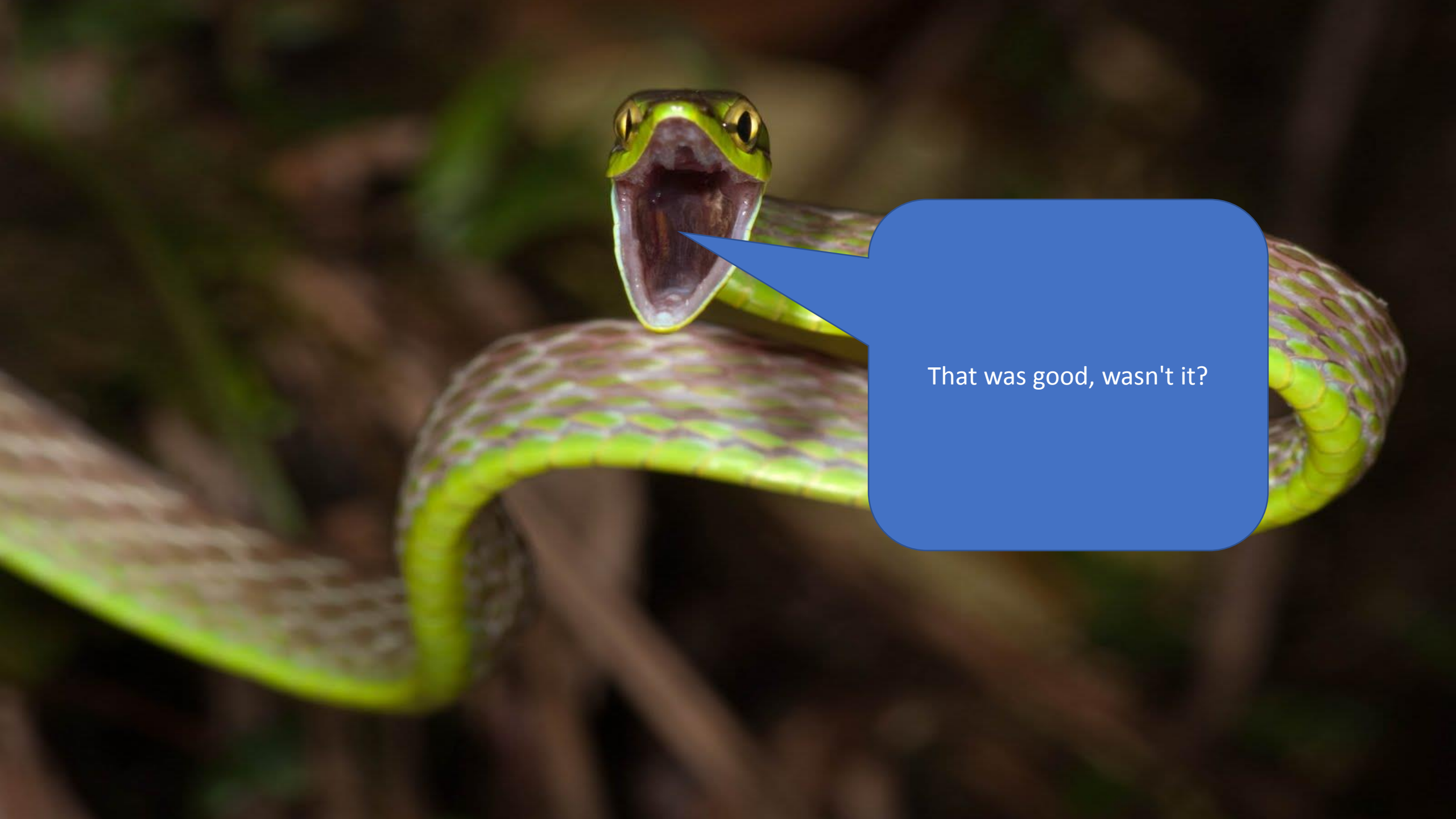


A scenic view of a snowy mountain valley at dusk. The sky is a pale, clear blue. In the foreground and middle ground, a town is nestled in the valley, its buildings and streets glowing with warm, golden-yellow lights. The surrounding mountains are covered in snow, with some dark evergreen trees visible. A large, white, diamond-shaped graphic is overlaid on the left side of the image, containing the text "Now ...".

Now ...



My parents  
went to  
Galtür , this  
is what they  
saw ...



That was good, wasn't it?

The background features a complex geometric pattern of overlapping shapes. A large, light blue diamond shape is centered, with its corners extending towards the edges of the frame. This diamond is overlaid by several smaller, semi-transparent yellow and blue shapes, creating a layered effect. The overall composition is clean and modern, with a focus on geometric forms and color contrast.

Any questions ?

Thanks for  
listening

- By Scott

